

# 358



1/2 HP HEAVY DUTY

4 YEAR WARRANTY



BIO SHIELD (Antimicrobial) for **ODOR PROTECTION!** Disposers are treated with an antimicrobial agent molded inside providing protection against odor causing bacteria growth.



THE TORQUE MASTER GRINDING SYSTEM is a combination of computer designed and balanced components working in unison to provide superior torque grind speed and long system life.

## MASTER EDITION

### Easy and Fast to Install

WASTEMAID disposers feature Speed Master Mounting, an exclusive system that provides fast and economical installation.

### Corrosion Proof

The WASTEMAID 358 carries a lifetime warranty against failure due to corrosion.

### Permanent Magnet Motors

WASTEMAID motors offer maximum torque instantly with the power to cut through potential jams.

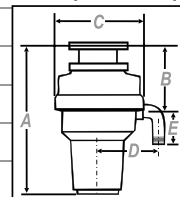
### Compact and Lightweight

The compact design of your WASTEMAID allows inclusion where limited under counter space is available.

### Removable Splash Guard

All WASTEMAID models have a removable splash guard, ideal for easy cleaning and replacement.

SPECIFICATIONS	MODEL #358
<b>HORSEPOWER</b>	1/2 HP
<b>MOTOR SPEED RPM</b>	2600 RPM
<b>VOLTAGE</b>	220-240v
<b>WATTAGE</b>	490
<b>AMPS</b>	2.25
<b>CYCLES</b>	50/60
<b>MOTOR TYPE</b>	Permanent Magnet
<b>SPLASH GUARD</b>	EPDM Rubber
<b>DRAIN OUTLET</b>	Polycarbonate 940
<b>GRIND RING</b>	Stainless Steel
<b>SWIVEL IMPELLERS</b>	Cast Stainless Steel
<b>BALANCED TURNTABLE</b>	Stainless Steel
<b>BALANCED ARMATURE SHAFT</b>	Stainless Steel
<b>HOPPER</b>	ABS
<b>DRAIN HOUSING</b>	Thermoset polymer
<b>APPLIANCE PROTECTOR</b>	Manual Reset
<b>SINK FLANGE</b>	Polyamide 66
<b>STOPPER</b>	SUS304/NBR/ABS
<b>BEARINGS</b>	Permanently Lubricated, Sleeve Type
<b>SOUND SHELL</b>	Full
<b>SINK WASTE</b>	90 MM
<b>INDIVIDUAL SHIPPING WEIGHT</b>	5.2 KG
<b>MASTER CARTON WEIGHT (4 UNITS)</b>	22.7 KG
<b>MEASUREMENT A</b>	378 MM
<b>MEASUREMENT B</b>	185 MM
<b>MEASUREMENT C</b>	219 MM
<b>MEASUREMENT D</b>	140 MM
<b>MEASUREMENT E</b>	70 MM
<b>LIFETIME CORROSION GUARANTEE</b>	Yes



ANAHEIM (UK) LIMITED

TEL: +44 (0) 1483 572 294

Email: ContactUs@AnaheimUK.com

www.WasteMaid.co.uk

All Waste Maid Disposers are compliant with the EC Directive regards RoHS.